

VELLOSLIA

CONTRIBUIÇÕES

DO

MUSEU BOTANICO DO AMAZONAS

---

VOLUME QUARTO  
ESTAMPAS  
ARCHEOLOGIA, PALEONTOLOGIA

---

1885 — 1888

( SEGUNDA EDIÇÃO )

---

RIO DE JANEIRO  
IMPRESA NACIONAL

1891





VELLOSIA



*manus  
com 6-XII-1933*

# VELLOSLIA

CONTRIBUIÇÕES

DO

MUSEU BOTANICO DO AMAZONAS

*Arthur G. S. Pereira, 1934*

VOLUME QUARTO

ESTAMPAS

ARCHEOLOGIA, PALEONTOLOGIA

1885 — 1888

( SEGUNDA EDIÇÃO )

RIO DE JANEIRO  
IMPRENSA NACIONAL

1891



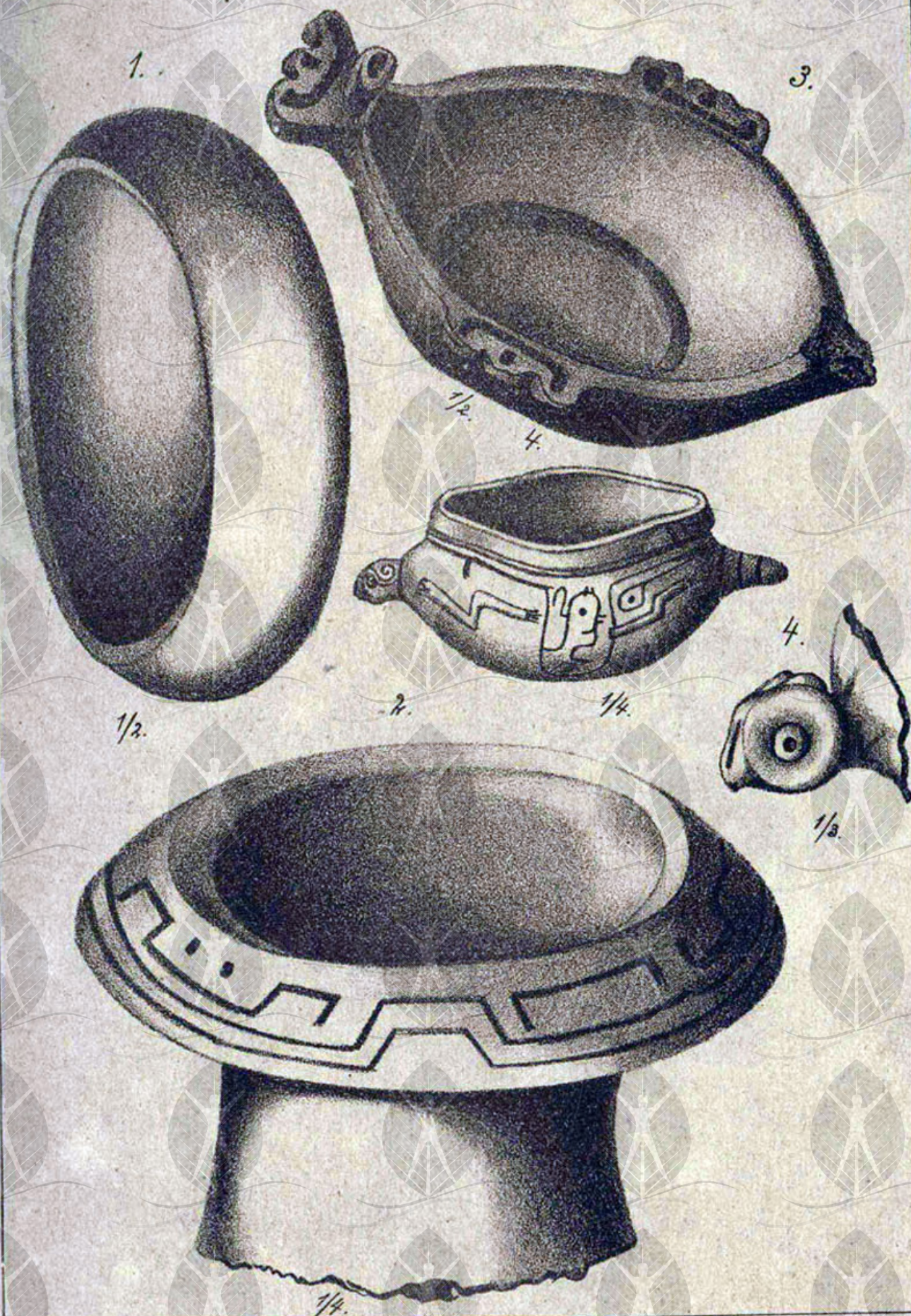


Phot. por Barb. Rodn.







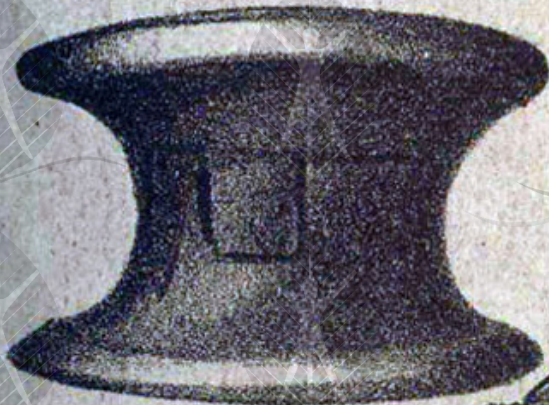






3.

3.



1/4.  
6.

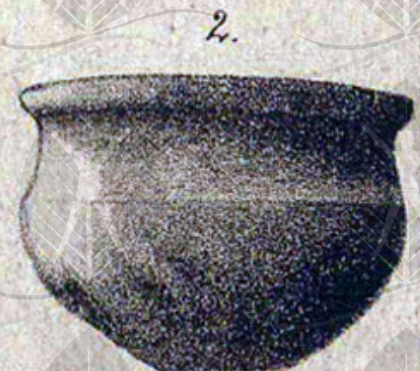
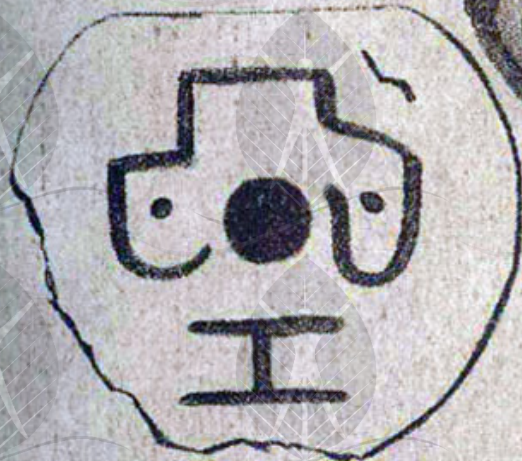
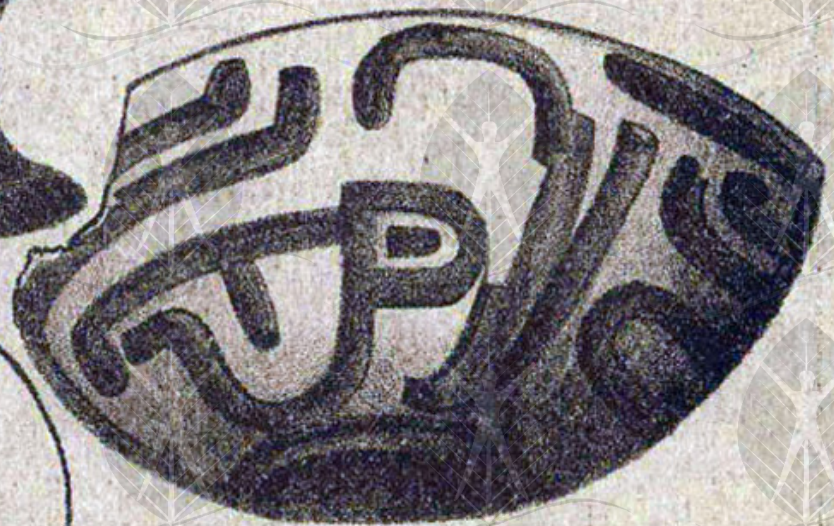
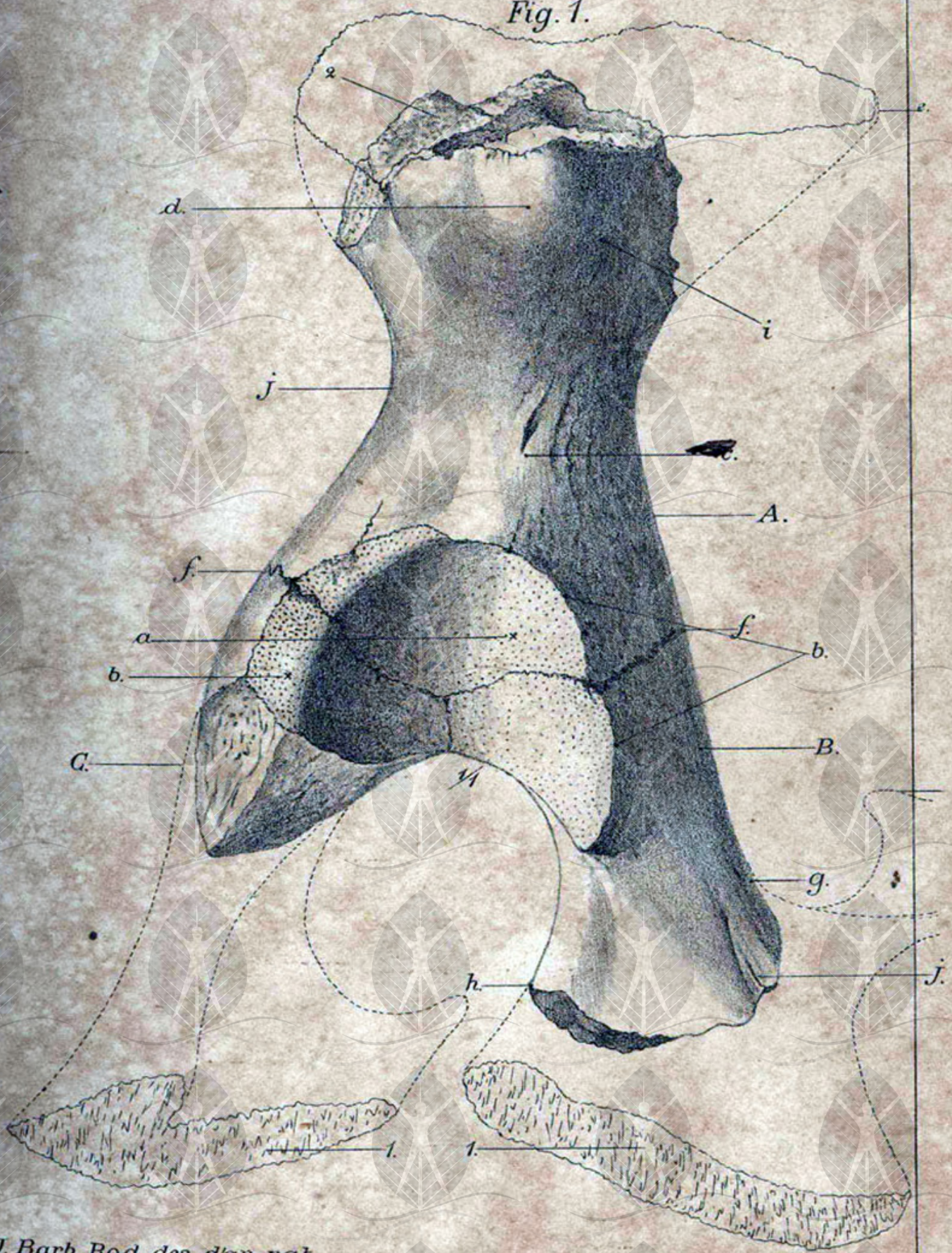




Fig. 1.



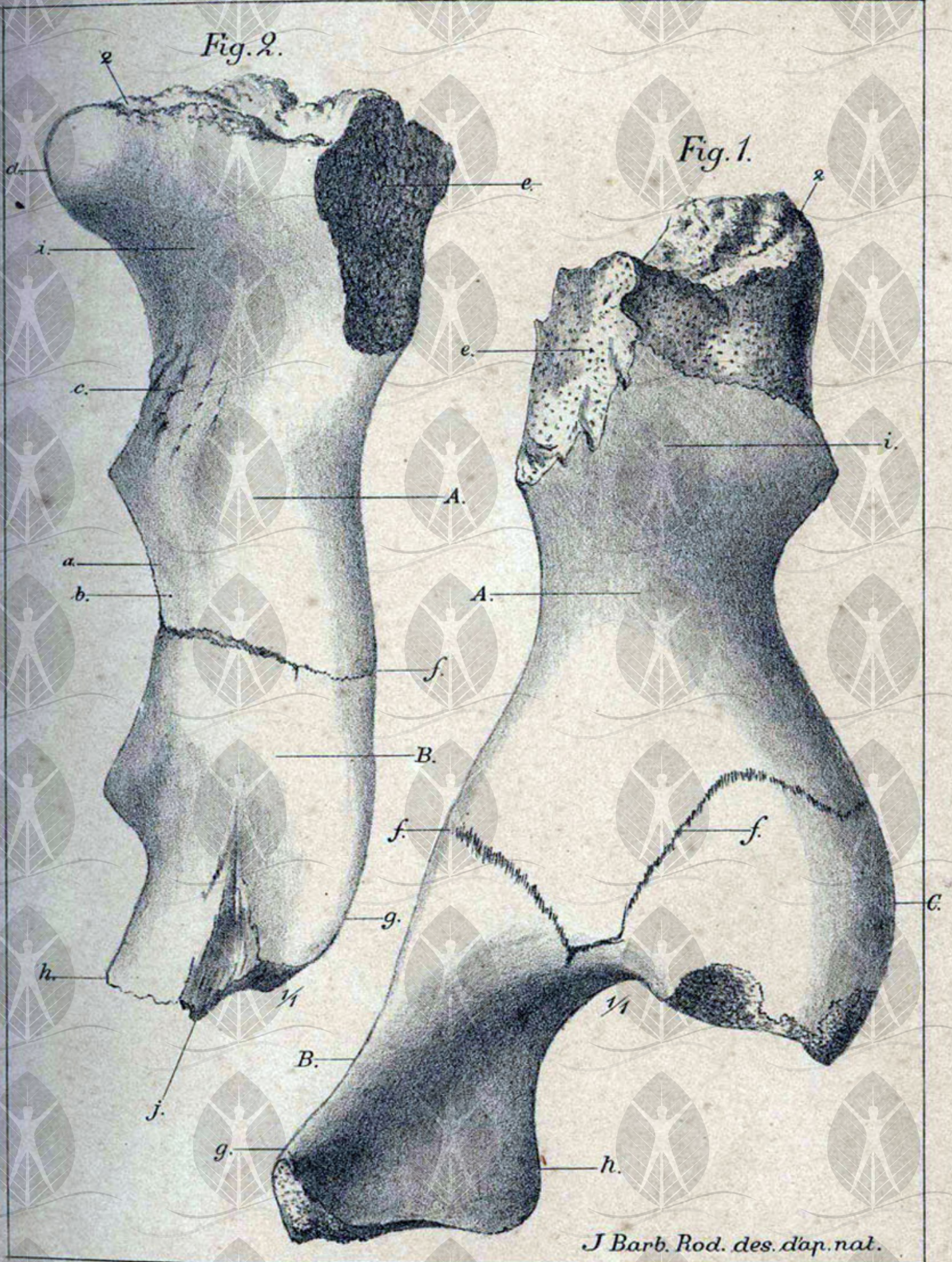
J. Barb. Rod. des. d'ap. nat.

COMPA DE ARTES GRAPHICAS - RUA D'ASSIMBLEIA 44 e 46, RIO DE JANEIRO.

EMYS QUATERNARIA BARB. ROD.

Fig. 2.

Fig. 1.



J Barb. Rod. des. d'ap. nat.

Fig. 1.



$\frac{1}{4}$ .

Fig. 2.



$\frac{1}{4}$ .

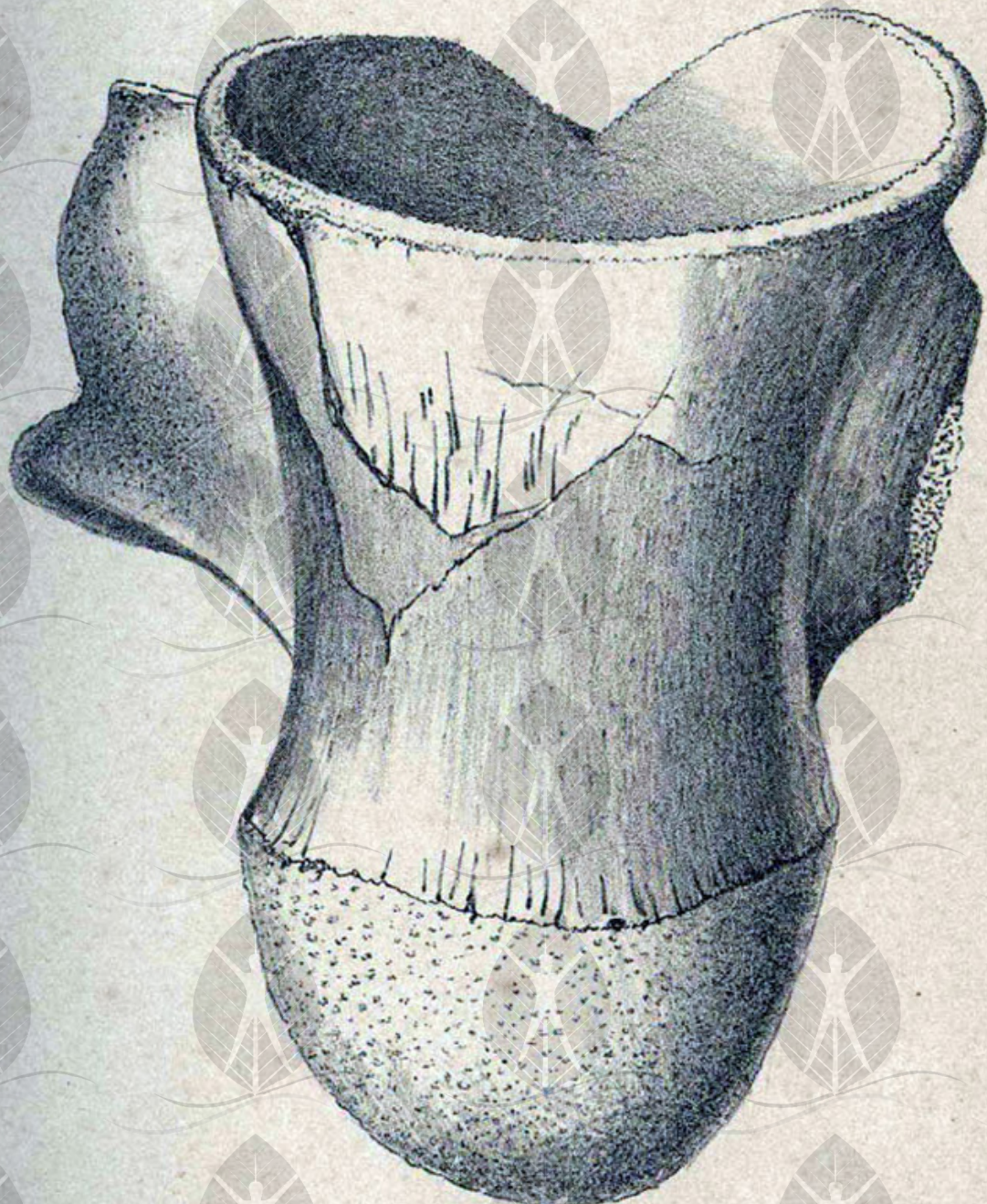
J. Barb. Rod. des. d'ap. nat.

COMP. DE ARTES GRAPHICAS - RUA D'ASSEMBLEIA 44 e 46, RIO DE JANEIRO.

EMYS QUATERNARIA BARB. ROD.



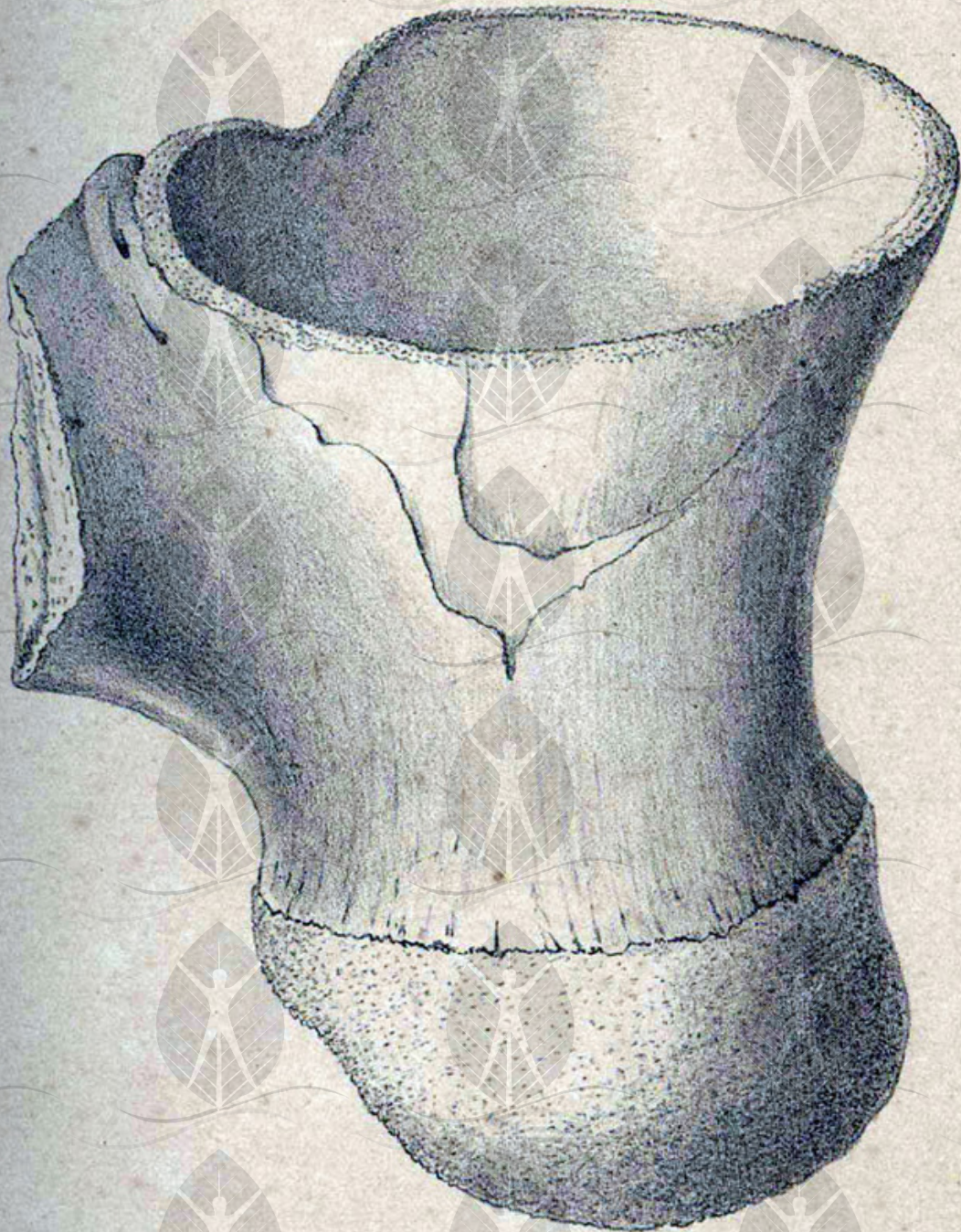
*Est. IV.*



$\frac{2}{3}$

*J. Barb. Rod. del. at. nat.*

Est. V



$\frac{2}{3}$

*J. Barb. Rod. del. et. nat.*

SEN. DE ARTES GRAPHICAS - RUA D'ASSEMBLEIA 44 e 46, RIO DE JANEIRO.

LADO

EMYS MACROCOCCYGEANA BARB. ROD.



2/3

*J. Barb. Rod. del. at. nat.*

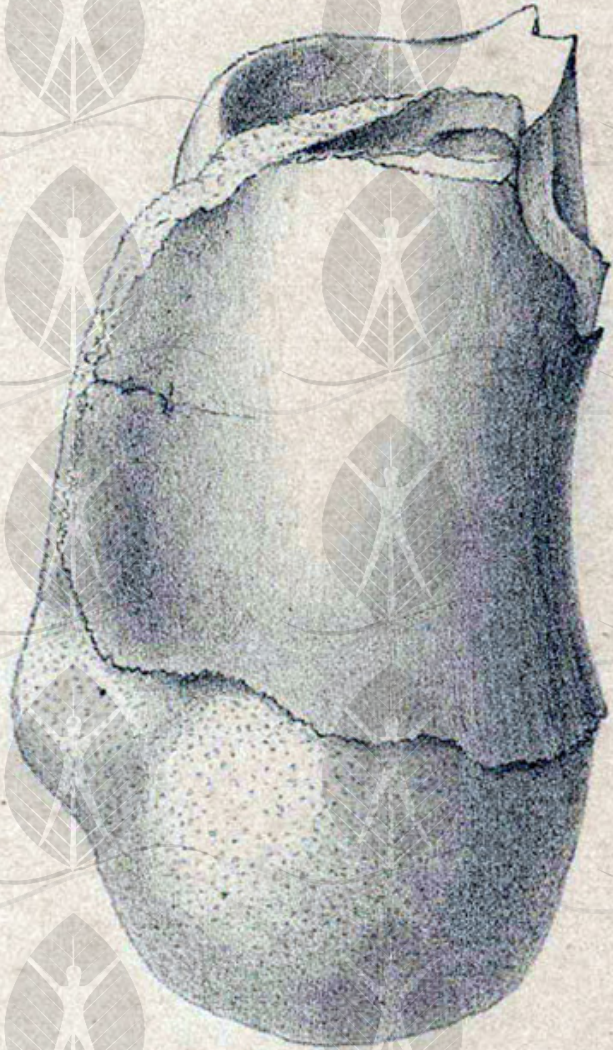
COMP. DE ARTES GRAPHICAS - RUA D'ASSEMBLEIA 44 e 46, RIO DE JANEIRO.

DORSO

EMYS MACROCOCYGEANA BARB. ROD.



1/1

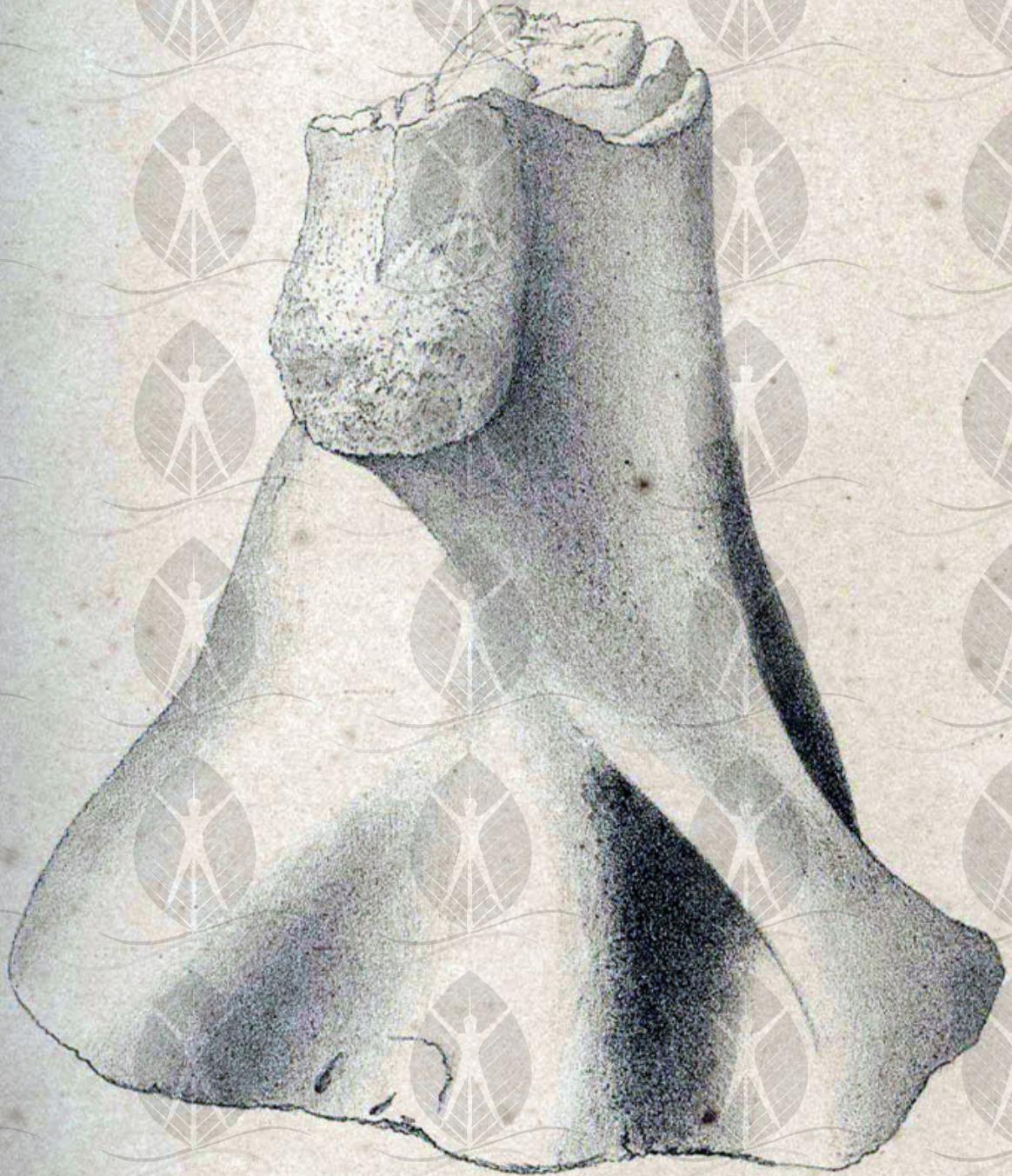


1/1

*J. Barb. Rod. del. at. nat.*

COMPA. DE ARTES GRAFICAS - BOCA D'ASSEMBLEA - No. 46, RUC DE JARDIN

EMYS MACROCOCYGEANA BARB. ROD.

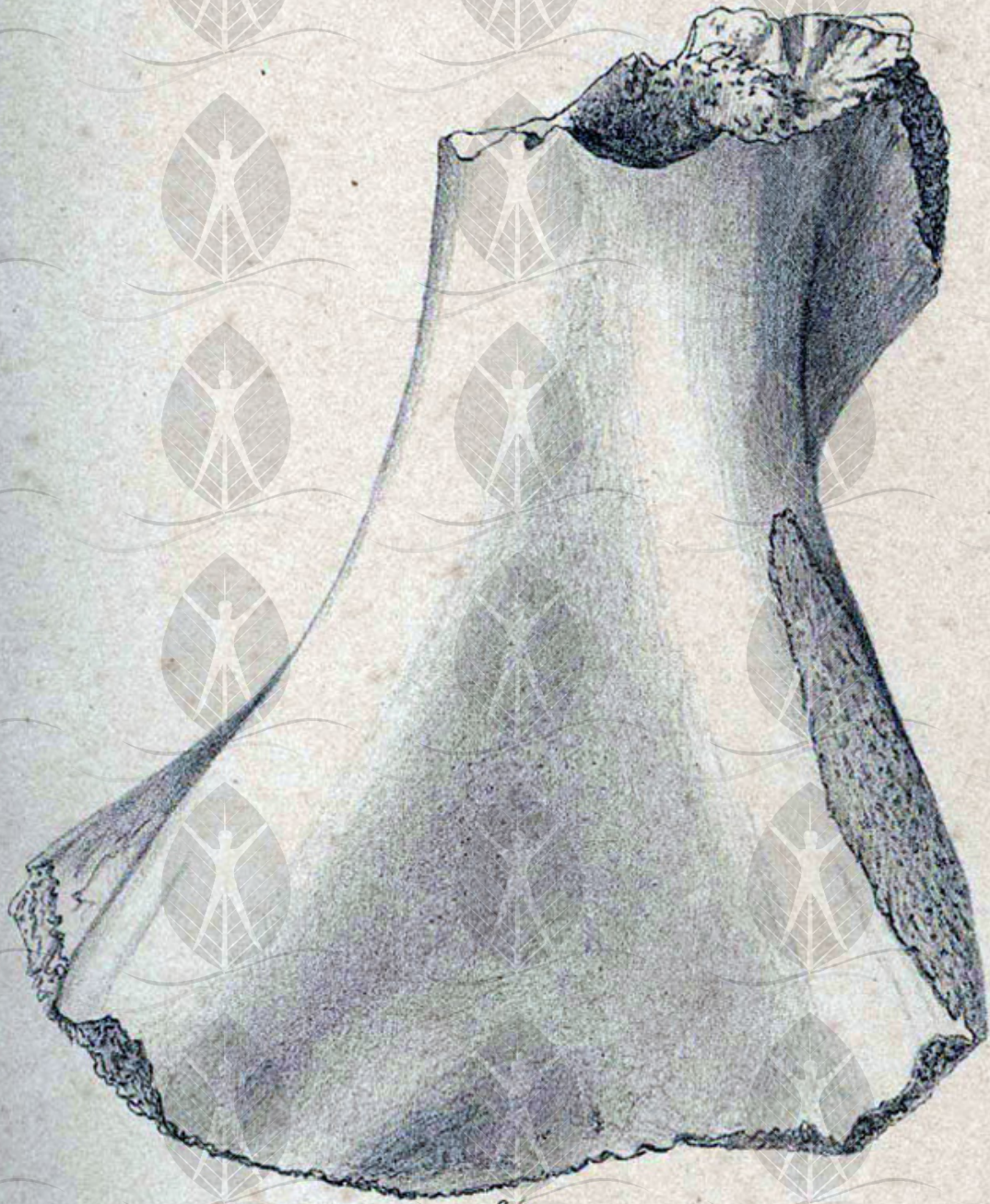


2/3

*J. Barb. Rod. del. at. nat.*

COMP. DE ARTES GRAFICAS - RUA D'ASSISMEGA 44 \* 46, RIO DE JANEIRO

FRENTE



9/3

*J. Barb. Rod. del. at. nat.*

COMP. DE ARTES GRAFICAS S. A. - RUA S. JOAQUIM, 44 - 01000 - SAO PAULO - SP - BRASIL

EMYS MACROCOCYGEANA BARB. ROD.

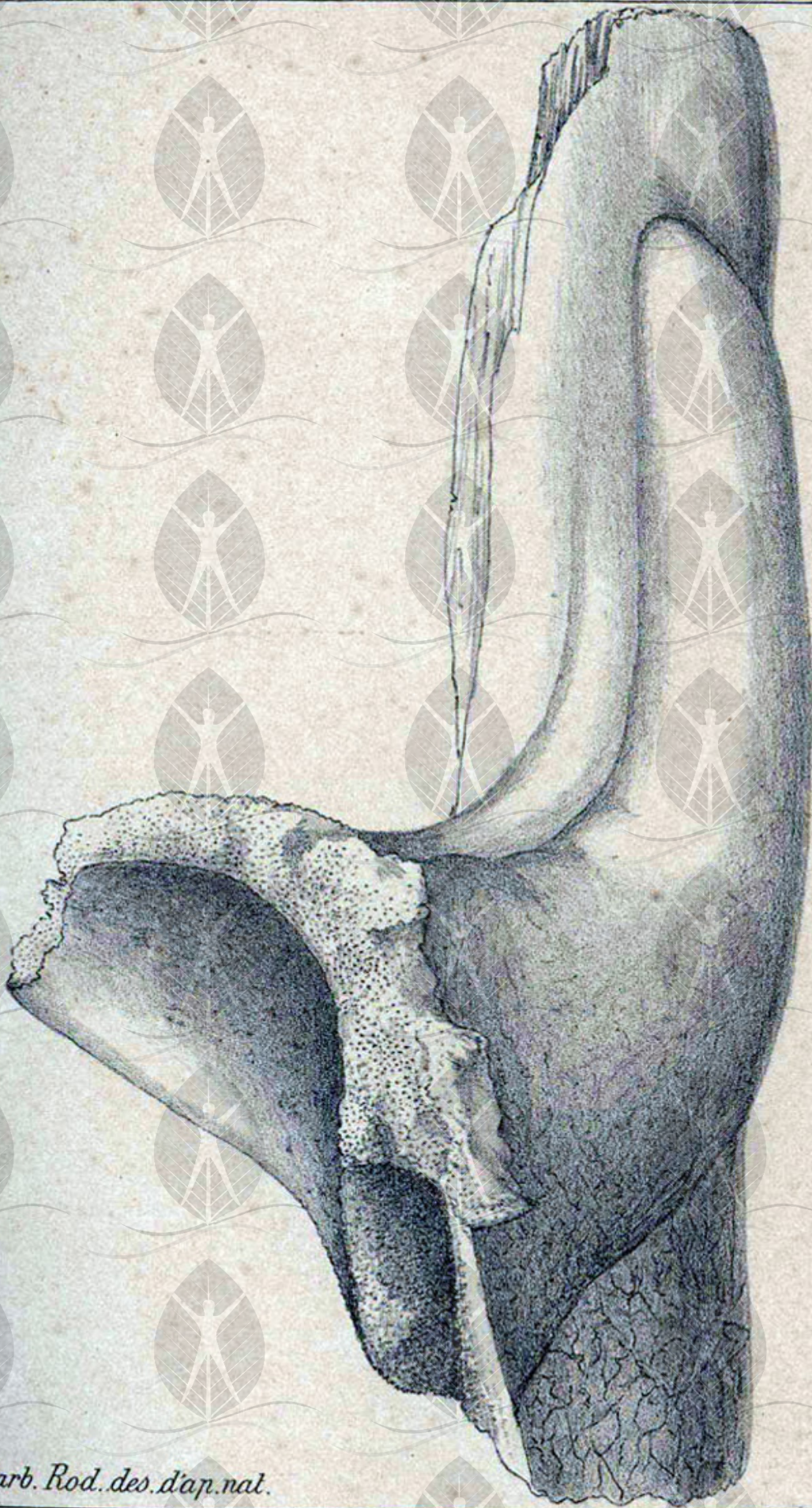
*Est. X.*



2/3

*J. Barb. Rod. del. at. nat.*

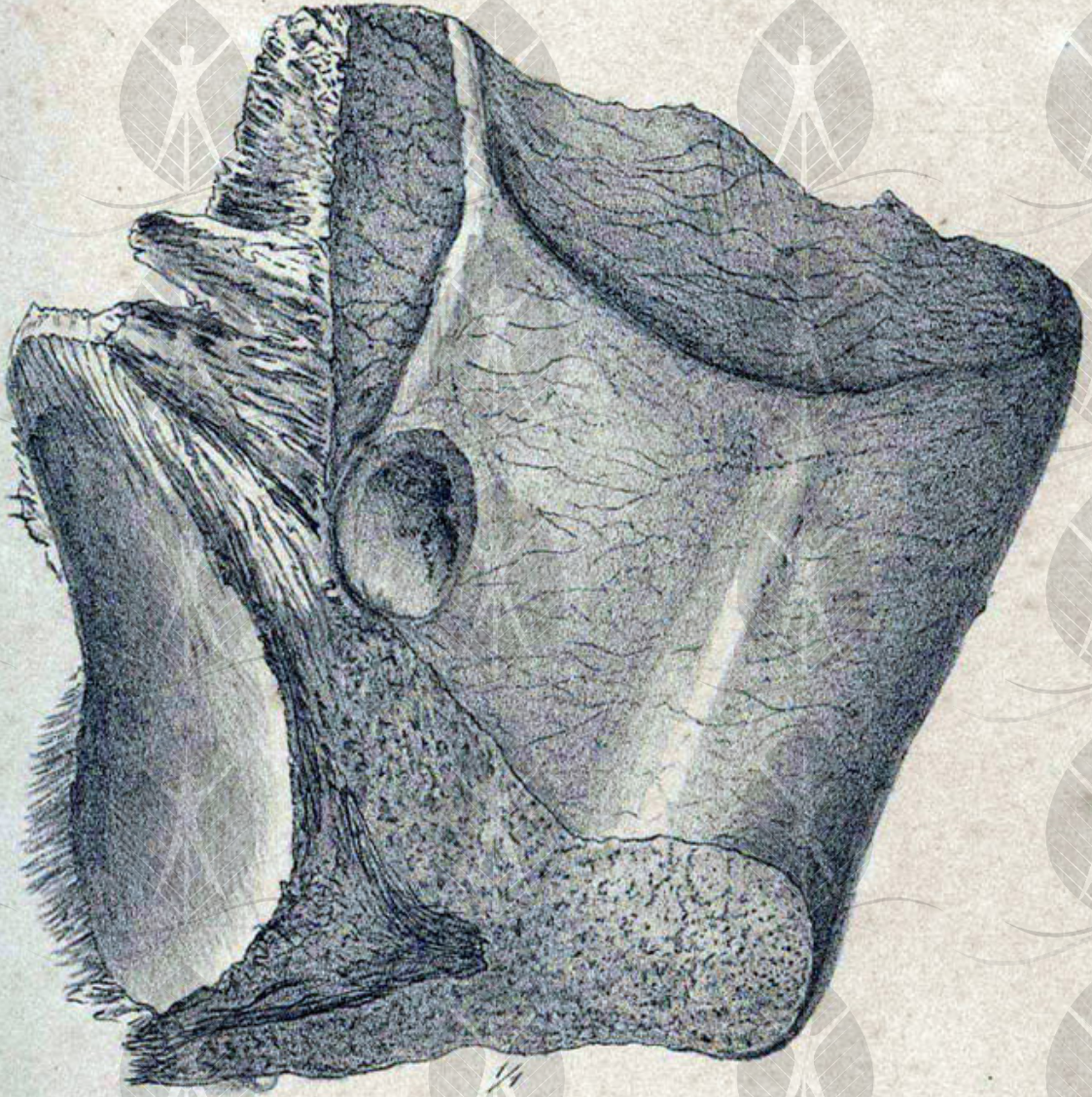
COMP. DE ARTES GRAPHICAS - RUA D'ASSEMBLÉA 44 e 46, RIO DE JANEIRO.



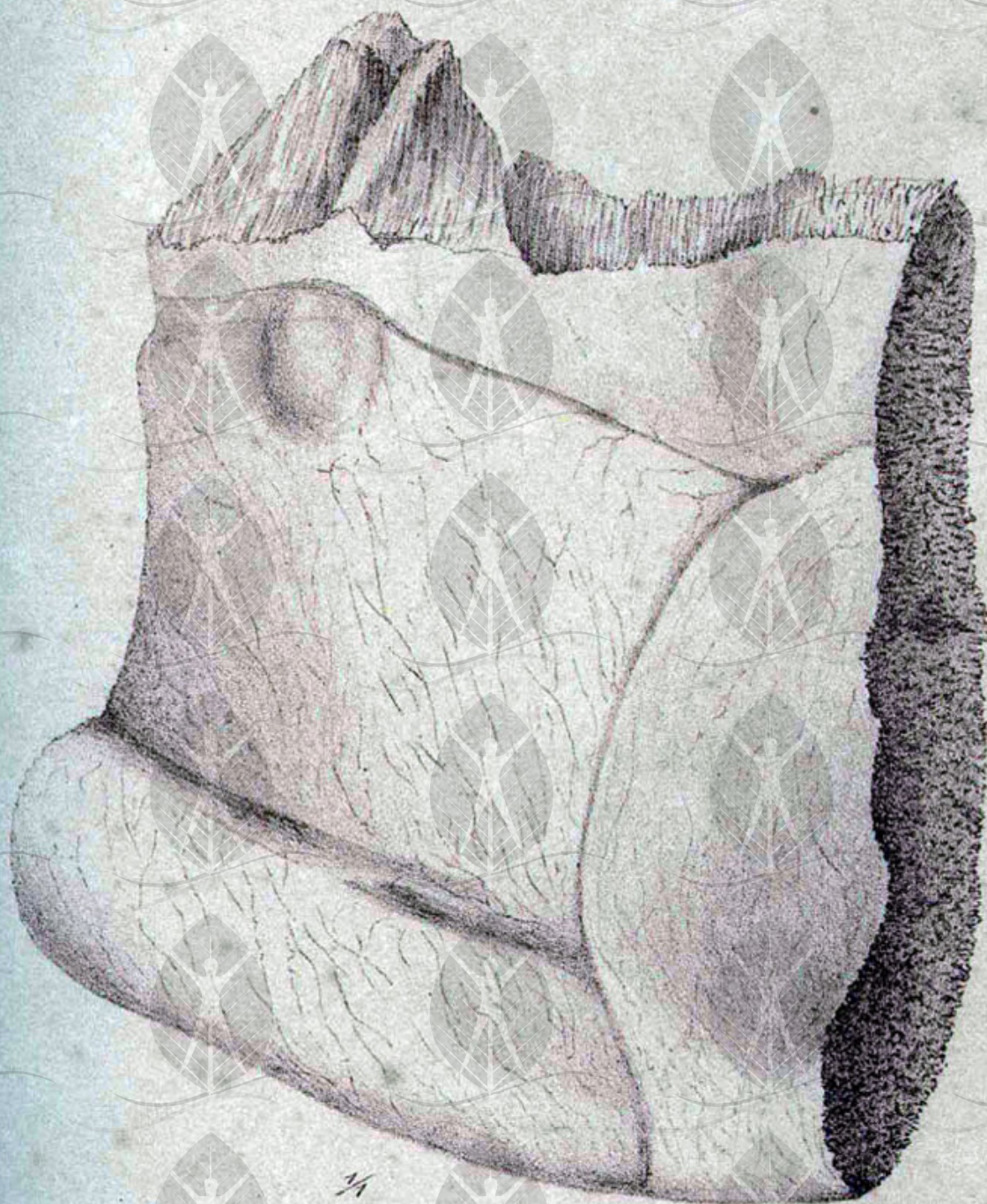
2/3

*J. Barb. Rod. des. d'ap. nat.*

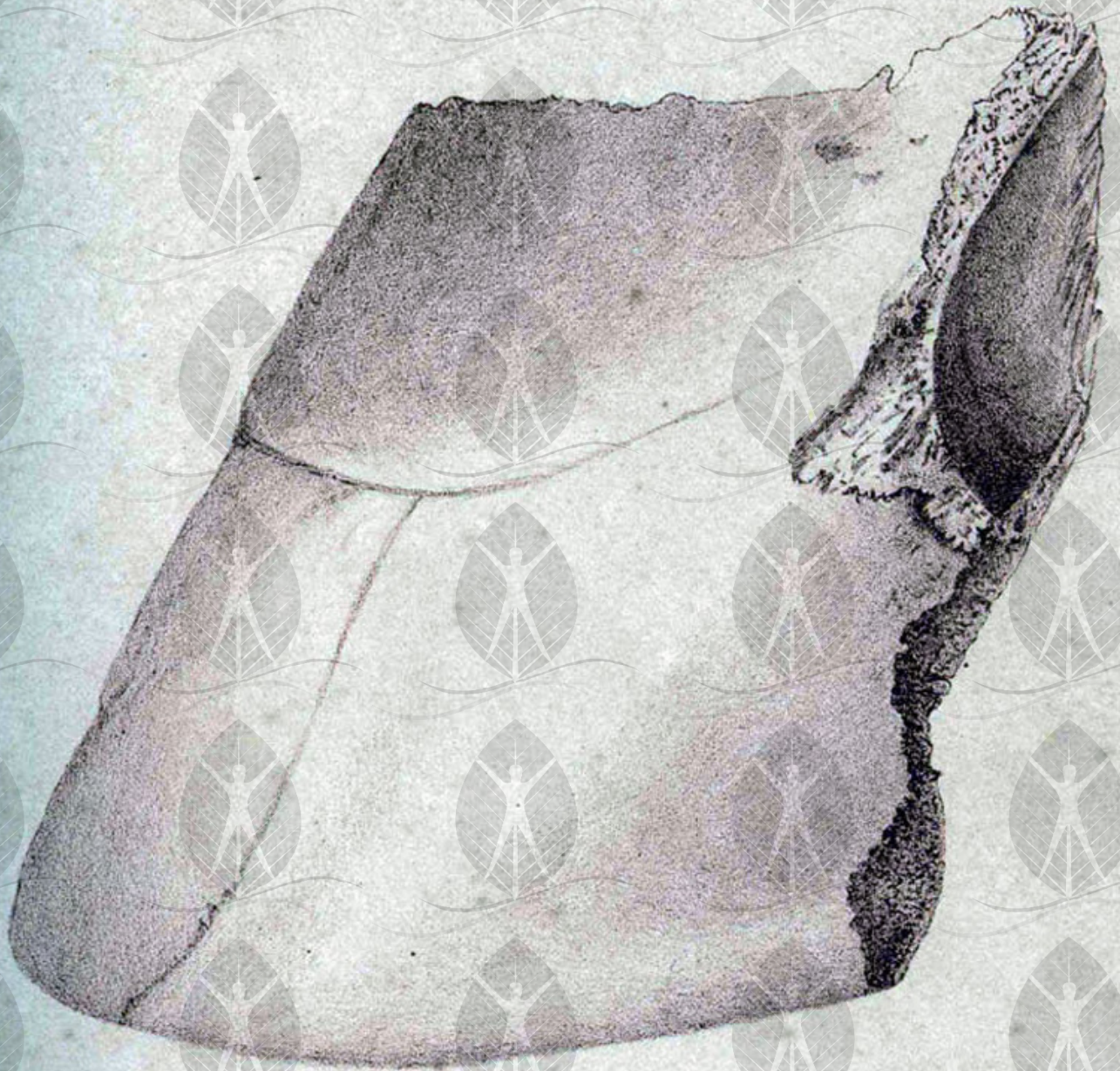




*J. Barb. Rod. dec. at. nat.*



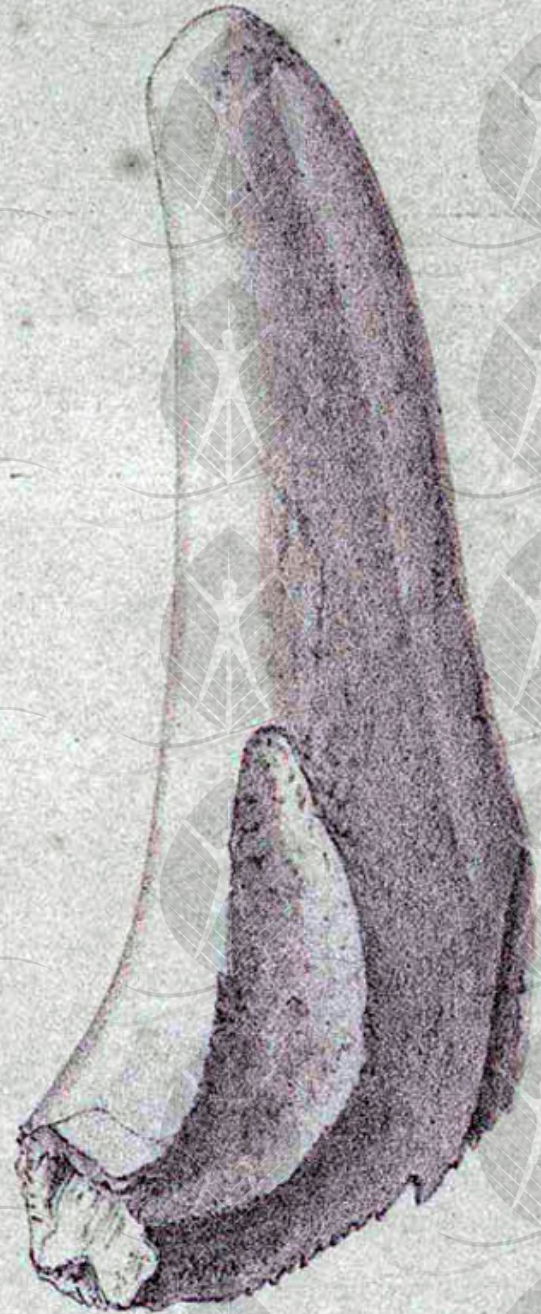
24



74

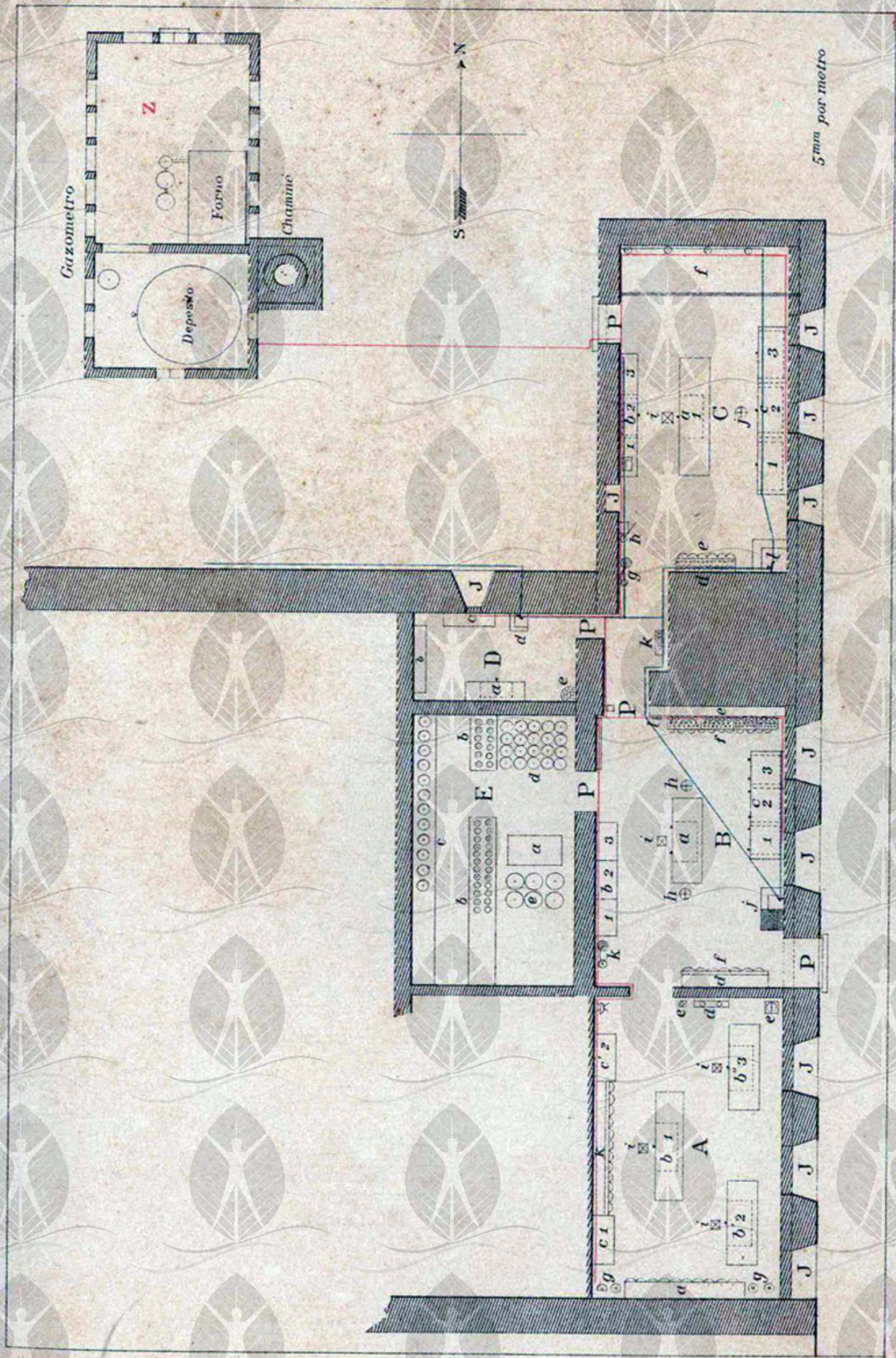
a

b



1/1

1/1



PLANO DO LABORATORIO DO MUSEO BOTANICO DO AMAZONAS  
(PAVIMENTO TERREO)

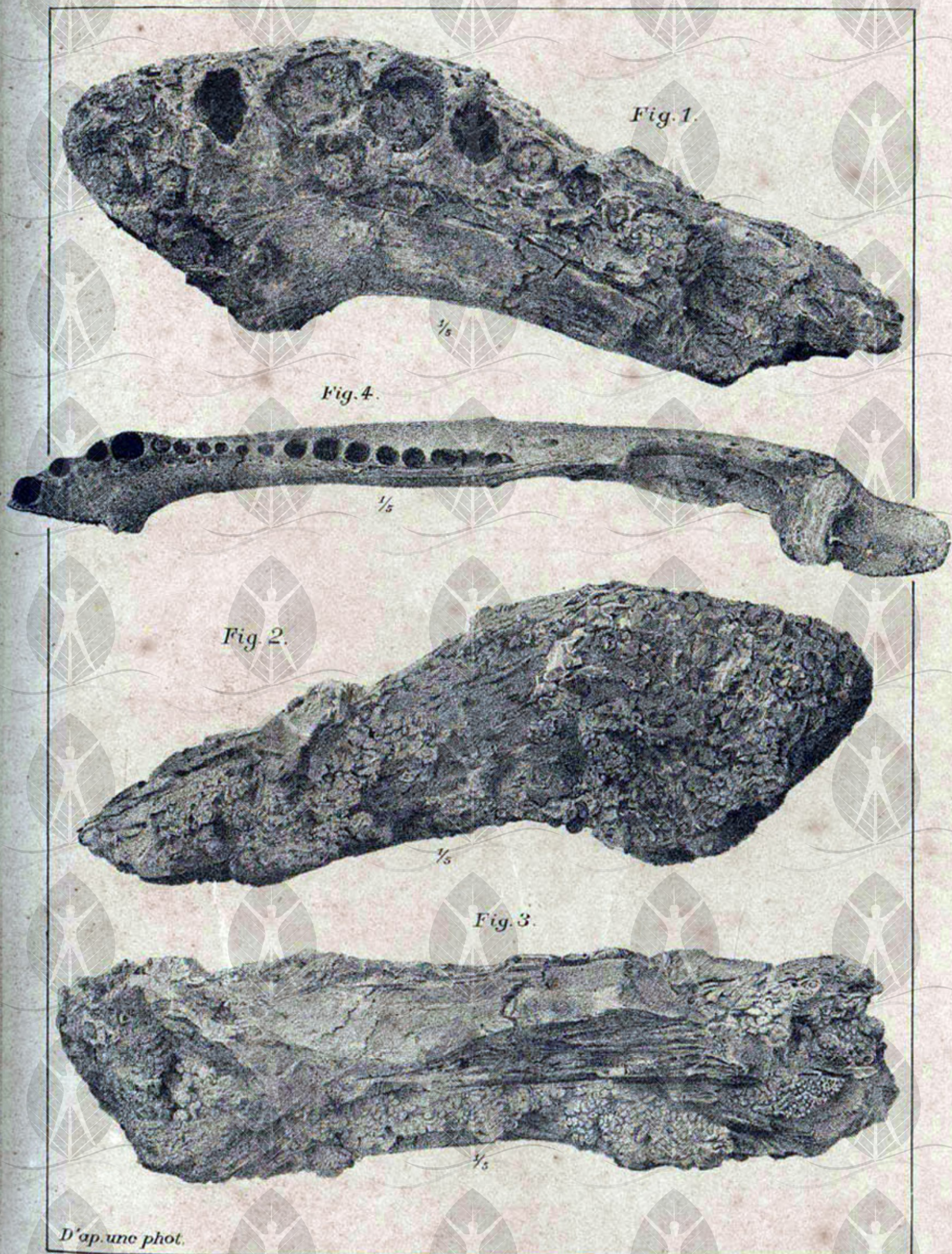


Fig. 1.

Fig. 4.

Fig. 2.

Fig. 3.

D'ap. une phot.

PURUSSAURUS BRASILIENSIS

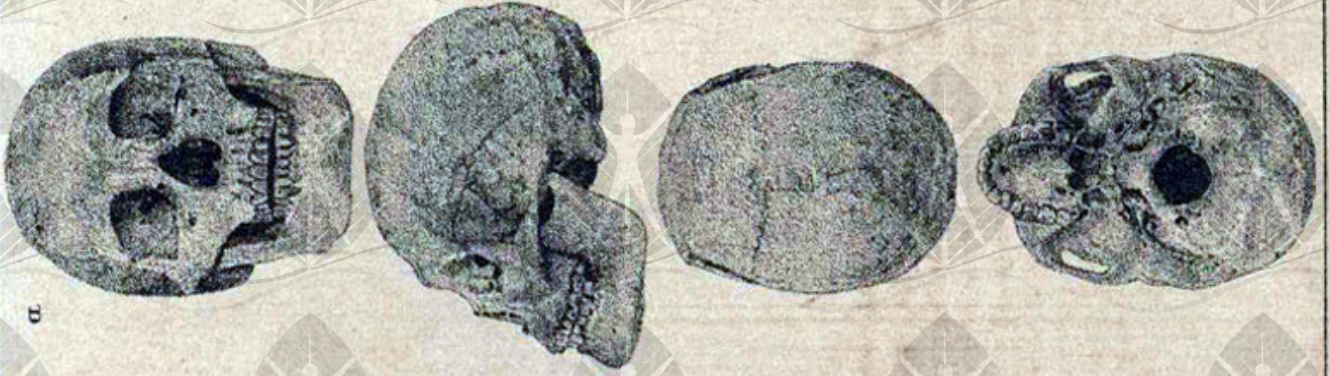
KRICHANÁ

b



PARINTINTIM

a



KATIANÁ

b



AUAINAMARY

a

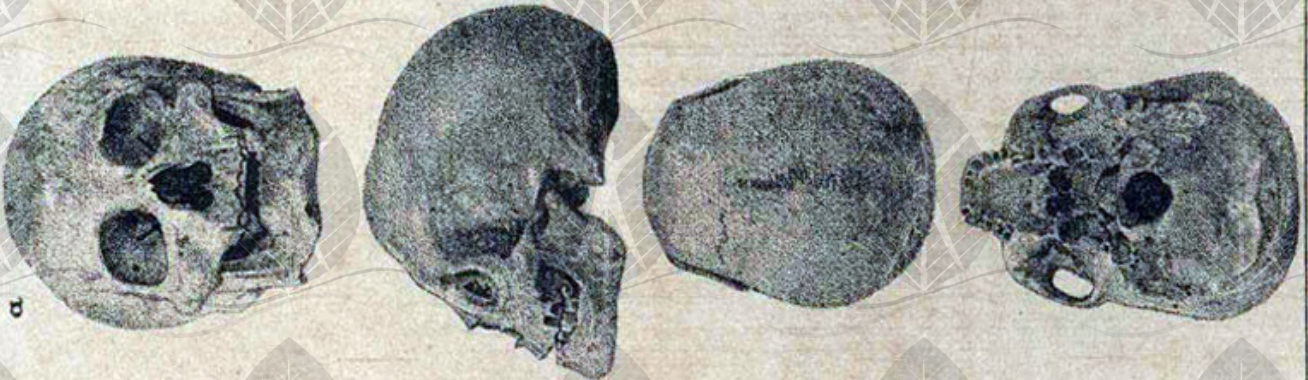


Fig. A



Fig. B

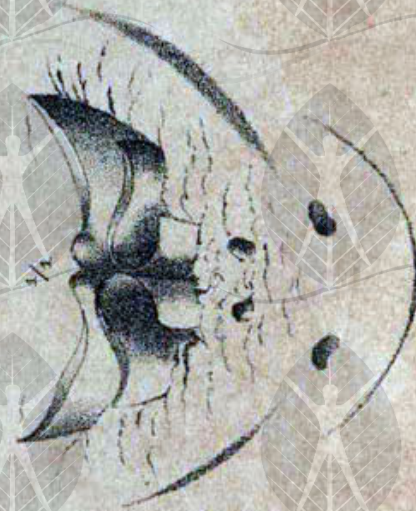


Fig. C

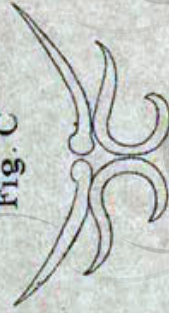


Fig. D







## AVISO

A disponibilização (gratuita) deste acervo, tem por objetivo preservar a memória e difundir a cultura do Estado do Amazonas. O uso destes documentos é apenas para uso privado (pessoal), sendo vetada a sua venda, reprodução ou cópia não autorizada. (Lei de Direitos Autorais - [Lei nº 9.610/98](#)). Lembramos, que este material pertence aos acervos das bibliotecas que compõem a rede de bibliotecas públicas do Estado do Amazonas.

EMAIL: [ACERVODIGITALSEC@GMAIL.COM](mailto:ACERVODIGITALSEC@GMAIL.COM)



Secretaria de  
**Estado de Cultura**



CENTRO CULTURAL DOS  
POVOS DA AMAZÔNIA